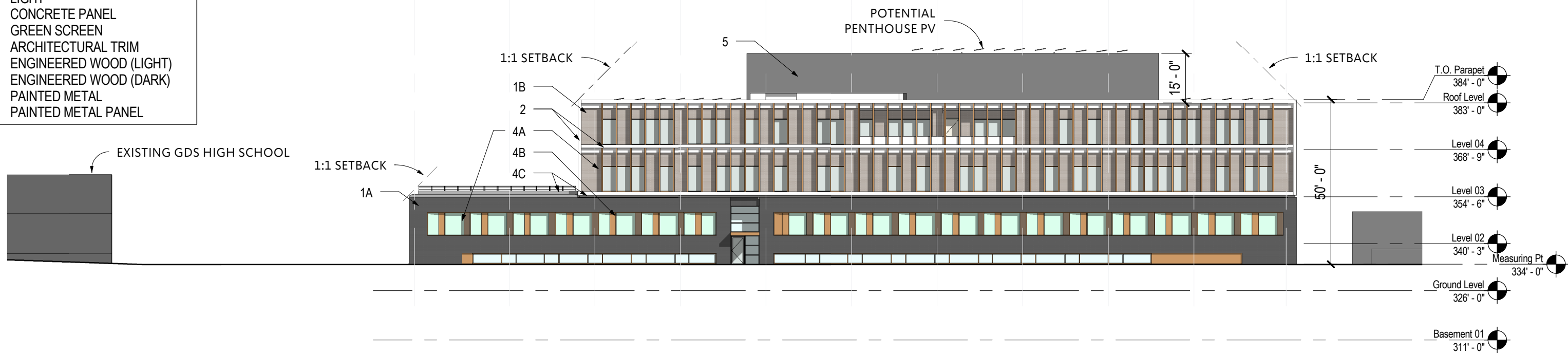


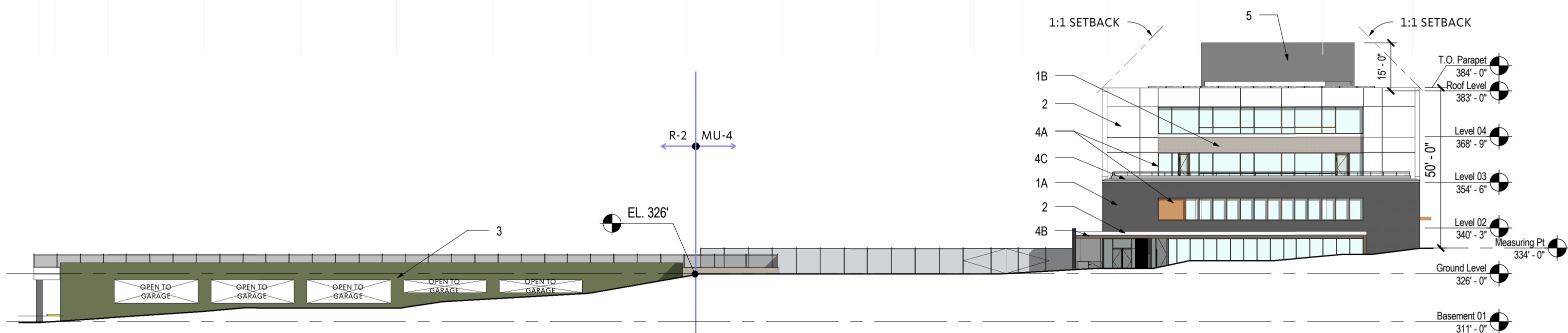
MATERIAL LEGEND	
1.	BRICK MASONRY
A.	DARK
B.	LIGHT
2.	CONCRETE PANEL
3.	GREEN SCREEN
4.	ARCHITECTURAL TRIM
A.	ENGINEERED WOOD (LIGHT)
B.	ENGINEERED WOOD (DARK)
C.	PAINTED METAL
5.	PAINTED METAL PANEL

11 10 9 8 7 6 5 4 3 2 1



EAST ELEVATION - 42ND STREET

F PB PC PD PE PF PG PH PI PJ PK PL A B C D E



SOUTH ELEVATION - DAVENPORT STREET

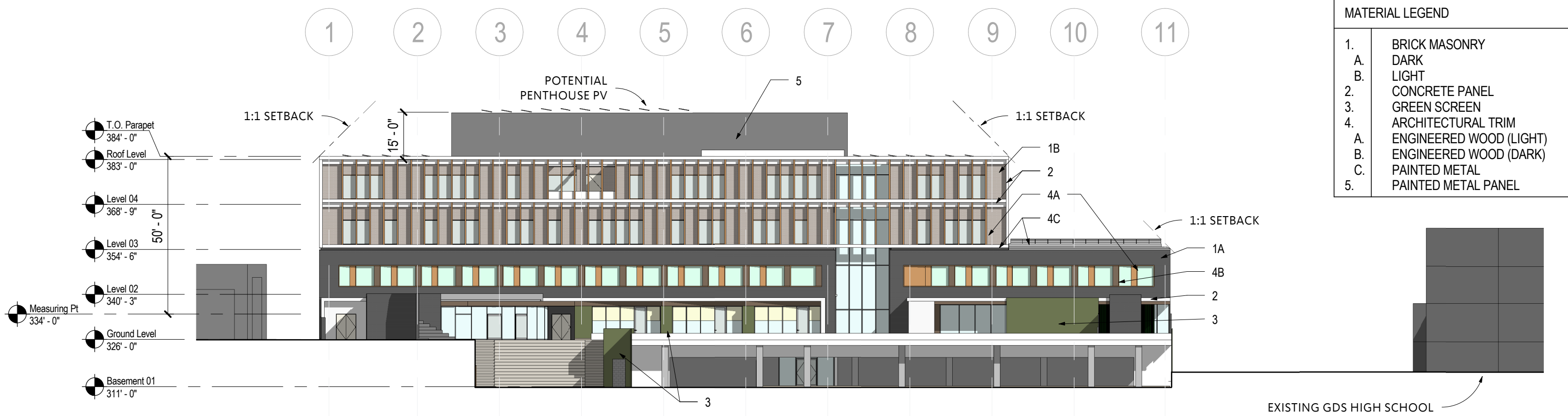
NOTE: FINAL EXTERIOR MATERIAL COLORS, BALCONY/WINDOW SIZE AND LOCATION, AND INTERIOR LAYOUTS SUBJECT TO CHANGE THROUGH DESIGN PROCESS AND INPUT FROM BZA.

**EXTERIOR ELEVATIONS**

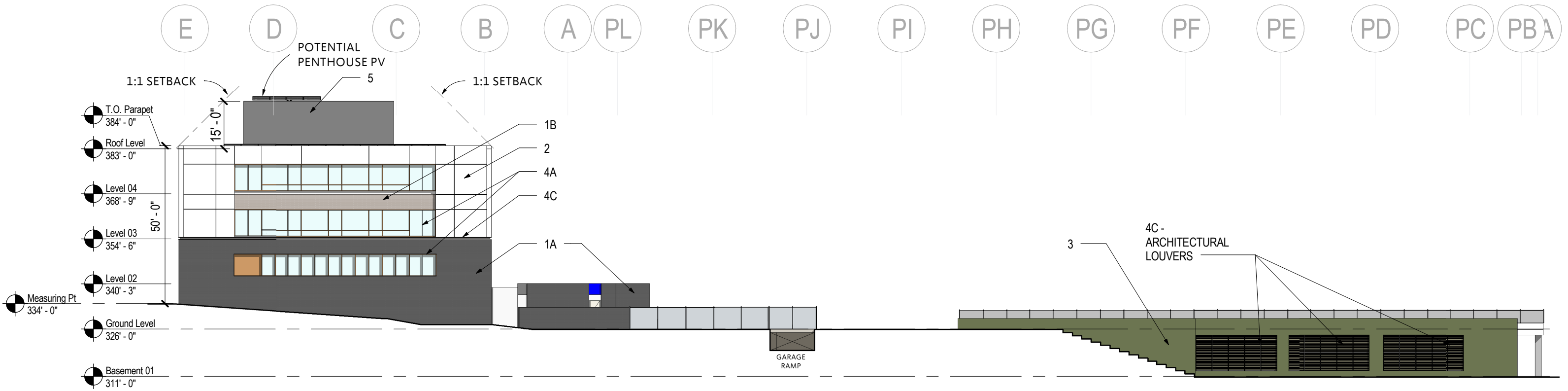
4200 Davenport St NW,  
Washington, DC 20016  
1/32" = 1'-0" | 11/29/17

Board of Zoning Adjustment  
District of Columbia  
CASE NO 13099  
EXHIBIT NO 08A2  
**A2.01**

MATERIAL LEGEND	
1.	BRICK MASONRY
A.	DARK
B.	LIGHT
2.	CONCRETE PANEL
3.	GREEN SCREEN
4.	ARCHITECTURAL TRIM
A.	ENGINEERED WOOD (LIGHT)
B.	ENGINEERED WOOD (DARK)
C.	PAINTED METAL
5.	PAINTED METAL PANEL



WEST ELEVATION



NORTH ELEVATION - ELLICOTT STREET

NOTE: FINAL EXTERIOR MATERIAL COLORS, BALCONY/WINDOW SIZE AND LOCATION, AND INTERIOR LAYOUTS SUBJECT TO CHANGE THROUGH DESIGN PROCESS AND INPUT FROM BZA.

EXTERIOR ELEVATIONS

4200 Davenport St NW,  
Washington, DC 20016  
1/32" = 1'-0" | 11/29/17

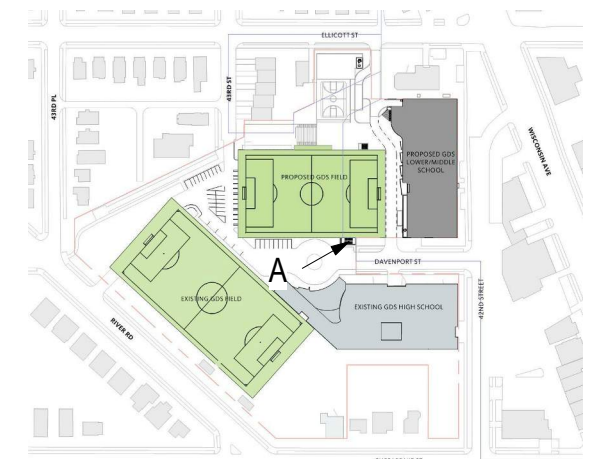
A2.02



**NOTE:**

FINAL EXTERIOR MATERIALS COLORS, BALCONY/WINDOW SIZE AND LOCATION, AND INTERIOR LAYOUTS SUBJECT TO CHANGE THROUGH DESIGN PROCESS AND INPUT FROM BZA.

REFER TO SHEETS G0.09 AND G0.10 FOR SITE PLANTINGS AND FENCING. SOME PLANTINGS, FENCING, SIDEWALKS, AND UTILITY POLES HAVE BEEN MODIFIED IN IMAGES FOR CLARITY OF BUILDING MASSING AND DESIGN INTENT.



**DAVENPORT STREET**

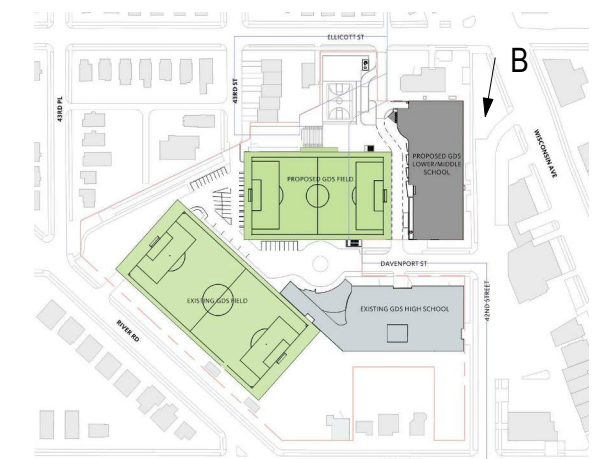
**RENDERED PERSPECTIVES**



**NOTE:**

FINAL EXTERIOR MATERIALS COLORS, BALCONY/WINDOW SIZE AND LOCATION, AND INTERIOR LAYOUTS SUBJECT TO CHANGE THROUGH DESIGN PROCESS AND INPUT FROM BZA.

REFER TO SHEETS G0.09 AND G0.10 FOR SITE PLANTINGS AND FENCING. SOME PLANTINGS, FENCING, SIDEWALKS, AND UTILITY POLES HAVE BEEN MODIFIED IN IMAGES FOR CLARITY OF BUILDING MASSING AND DESIGN INTENT.



**42ND STREET - WITHOUT STREET TREES**

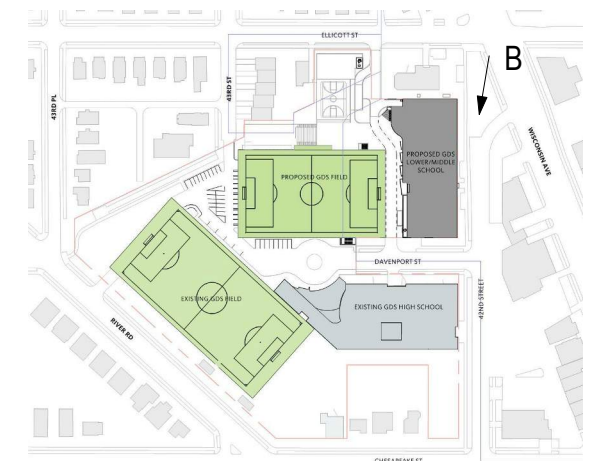
**RENDERED PERSPECTIVES**



**NOTE:**

FINAL EXTERIOR MATERIALS COLORS, BALCONY/WINDOW SIZE AND LOCATION, AND INTERIOR LAYOUTS SUBJECT TO CHANGE THROUGH DESIGN PROCESS AND INPUT FROM BZA.

REFER TO SHEETS G0.09 AND G0.10 FOR SITE PLANTINGS AND FENCING. SOME PLANTINGS, FENCING, SIDEWALKS, AND UTILITY POLES HAVE BEEN MODIFIED IN IMAGES FOR CLARITY OF BUILDING MASSING AND DESIGN INTENT.



**42ND STREET - WITH STREET TREES**

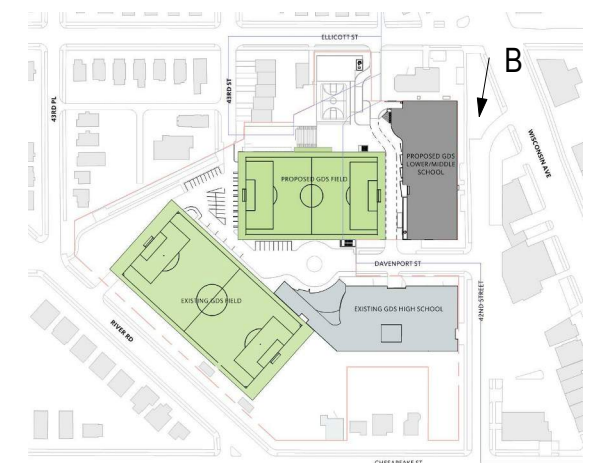
**RENDERED PERSPECTIVES**



RENDERED PERSPECTIVE



EXISTING PERSPECTIVE



**42ND STREET - WITH STREET TREES**

**PERSPECTIVE COMPARISON**



1. 42ND STREET SOUTH



2. 42ND STREET ENTRY

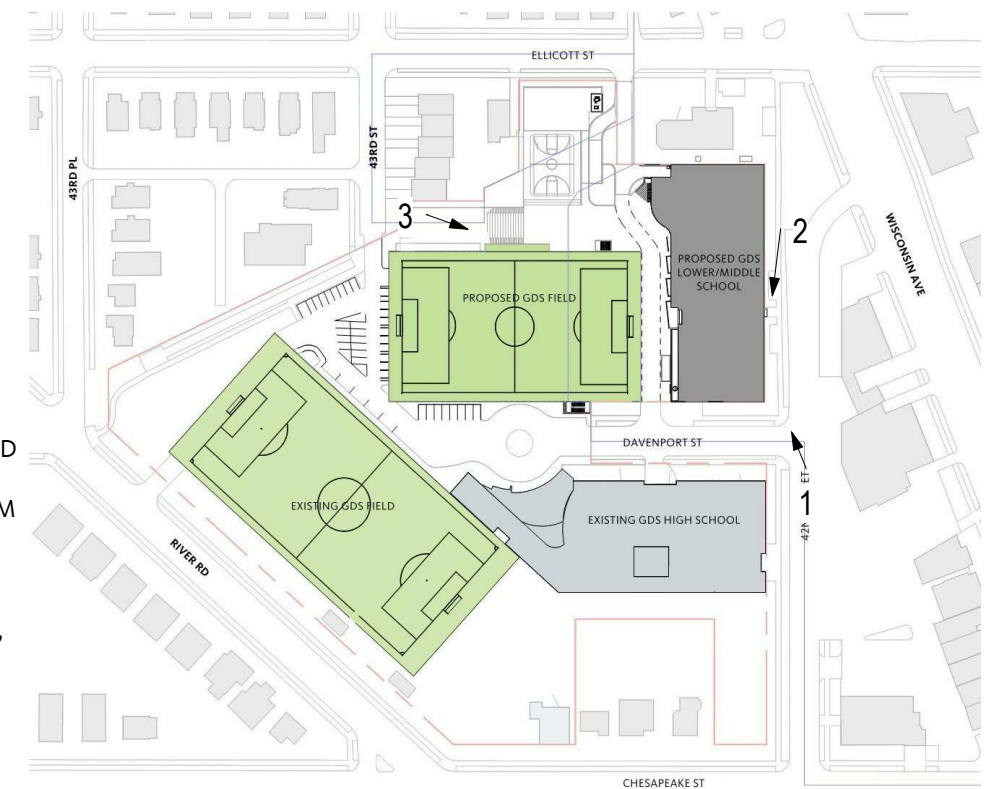


3. PLAY AREA

NOTE:

FINAL EXTERIOR MATERIALS COLORS, BALCONY/WINDOW SIZE AND LOCATION, AND INTERIOR LAYOUTS SUBJECT TO CHANGE THROUGH DESIGN PROCESS AND INPUT FROM BZA.

REFER TO SHEETS G0.09 AND G0.10 FOR SITE PLANTINGS AND FENCING. SOME PLANTINGS, FENCING, AND UTILITY POLES HAVE BEEN MODIFIED IN IMAGES FOR CLARITY OF BUILDING MASSING AND DESIGN INTENT.



**SITE VIGNETTES**

4200 Davenport St NW,  
Washington, DC 20016  
| 11/29/17

**A9.05**



4. 43RD STREET



5. ELLICOTT STREET SIDEWALK

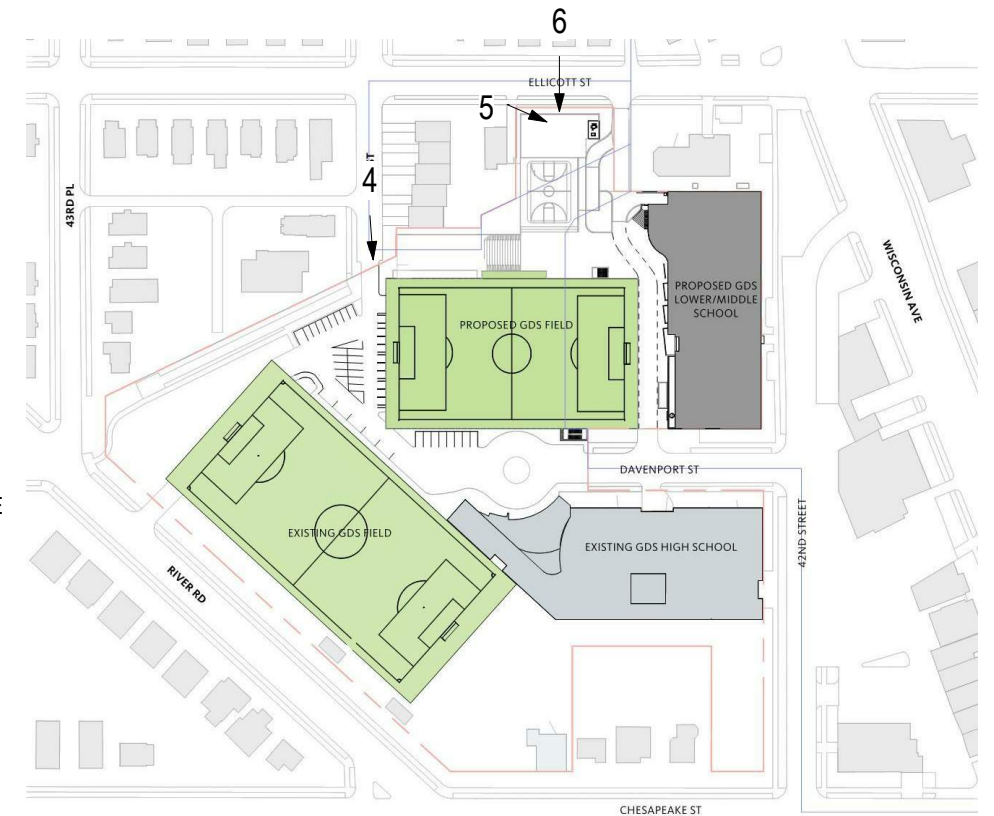


6. ELLICOTT STREET

NOTE:

FINAL EXTERIOR MATERIALS COLORS, BALCONY/WINDOW SIZE AND LOCATION, AND INTERIOR LAYOUTS SUBJECT TO CHANGE THROUGH DESIGN PROCESS AND INPUT FROM BZA.

REFER TO SHEETS G0.09 AND G0.10 FOR SITE PLANTINGS AND FENCING. SOME PLANTINGS AND FENCING HAVE BEEN MODIFIED IN IMAGES FOR CLARITY OF BUILDING MASSING AND DESIGN INTENT.



**SITE VIGNETTES**

4200 Davenport St NW,  
Washington, DC 20016  
| 11/29/17

**A9.06**



# 1. BRICK MASONRY

A. DARK



B. LIGHT



# 2. CONCRETE PANEL



# 3. VEGETATIVE WALL



# 4. ARCHITECTURAL TRIM

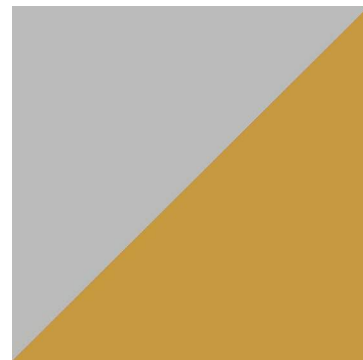
A. ENGINEERED WOOD



B. ENGINEERED WOOD



C. PAINTED METAL



# 5. PAINTED METAL PANEL



NOTE: FINAL EXTERIOR MATERIALS WILL BE WITHIN THE COLOR RANGES OF THE MATERIAL TYPES PROPOSED BASED ON THE AVAILABILITY AT THE TIME OF CONSTRUCTION WITHOUT REDUCING THE QUALITY OF THE MATERIALS

## MATERIAL PALETTE